

H₂S Sensor Solution

Datasheet – Rev. no. 10252024

- Water resistant H₂S sensor & IoT datalogger
- Rechargeable battery with backup
- Extra-long battery life
- User-friendly user interface
- Setup requires no programming
- Automatic teleoperator configuration



Table of Contents

TABLE OF CONTENTS2

H₂S SENSOR SPECIFICATIONS3

 Overall 3

 Mounting options 4

 Pipes and air filters 4

 Sewers and manholes..... 4

 Heating element..... 4

CONSIBIO LOGGERPRO™2

 Overall 2

 Cellular 2

 Mechanical..... 2

 Electrical 3

MILITARY GRADE ENCLOSURE AND CROSSBEAM5

 Durable enclosure and crossbeam for fast, simple and robust installation 5

REVISION HISTORY5



H₂S Sensor Specifications

The cutting-edge H₂S sensors is developed for ensuring optimal operation in collection systems and air filters. It is an advanced and cost-effective solution for monitoring gaseous hydrogen sulphide (H₂S) in harsh environments. The unit is optimized for low power consumption enabling battery-driven applications where power is not accessible.



Overall

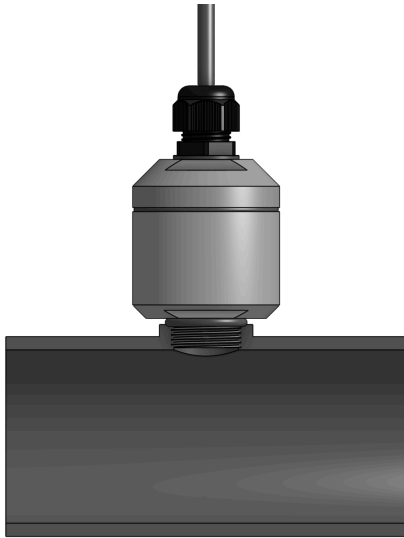
| Parameter | Value |
|----------------------|--|
| Expected lifetime | +10 years, with 6-12 months calibration / service interval |
| Guarantee | 2 years |
| Measurement range | Available in two different ranges: High concentrations: 0 – 2000 ppm Low concentrations: 0 – 50 ppm (0 – 50 000 ppb) |
| Resolution | Depends on selected range: 0-2000 ppm: 2 ppm 0-50 ppm: 0.1 ppm (100 ppb) |
| Housing material | AISI 316 stainless steel |
| Operating conditions | Temperature: -4°F to 122°F -20°C to +50°C Humidity: 0-99%RH |
| Cable length | 6.5 ft 2 meters |
| Compliance | Directive 2014/30/EU. DS_EN IEC 61326-1_2021 |



Mounting options

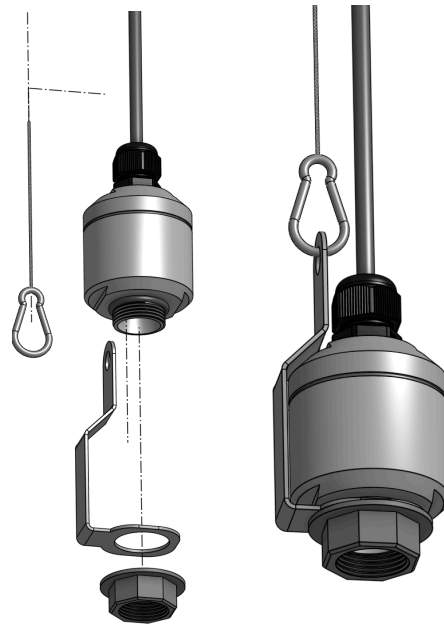
Pipes and air filters

The tip of the probe is a standard G3/4" (BSPP) male pipe thread. Therefore, the probe can easily be installed into the side of a pipe using a G3/4" adapter simply by screwing it into place. The probe is shipped with a high-quality O-ring for easy sealing of the connections.



Sewers and manholes

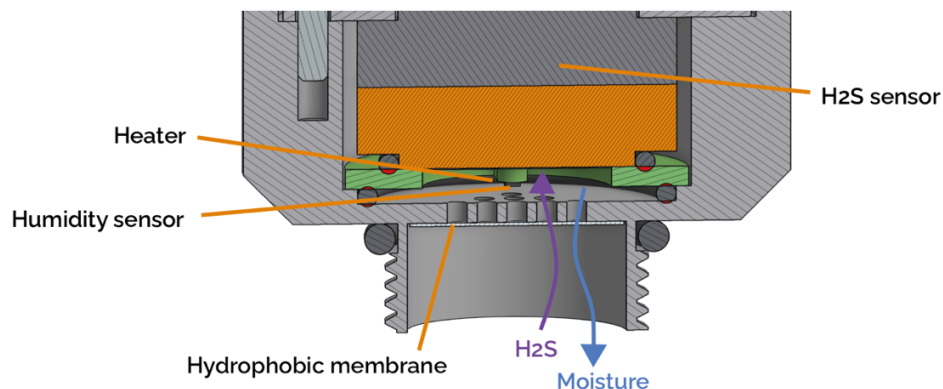
For use inside sewers or other free-hanging applications, the probe is used with a dedicated cable mount designed for optimal cable relief. It is not recommended to suspend the probe directly in the cable with the cable mount.



Heating element

Inside all Consibio H₂S sensors, is a dedicated heating element.

Once enabled, the heater will minimize the risk of condensed water formation on the sensor surface, and thereby ensuring the most robust measurements of H₂S.



Consibio LoggerPro™



Consibio LoggerPro™ is a modular industrial datalogger and controller capable of collecting and sending sensor data to Consibio Cloud (or self-hosted endpoints) and control actuators in a decentralized setup. All using the newest wireless technologies, completely plug&play.

Typical applications:

1. Permanent sewer and wastewater monitoring, where power is accessible.
2. Retrofit to remotely monitor and control 3rd party sensors or actuators.
3. Chemical dosing to prevent H₂S.
4. Odor and corrosion detection from H₂S.

Overall

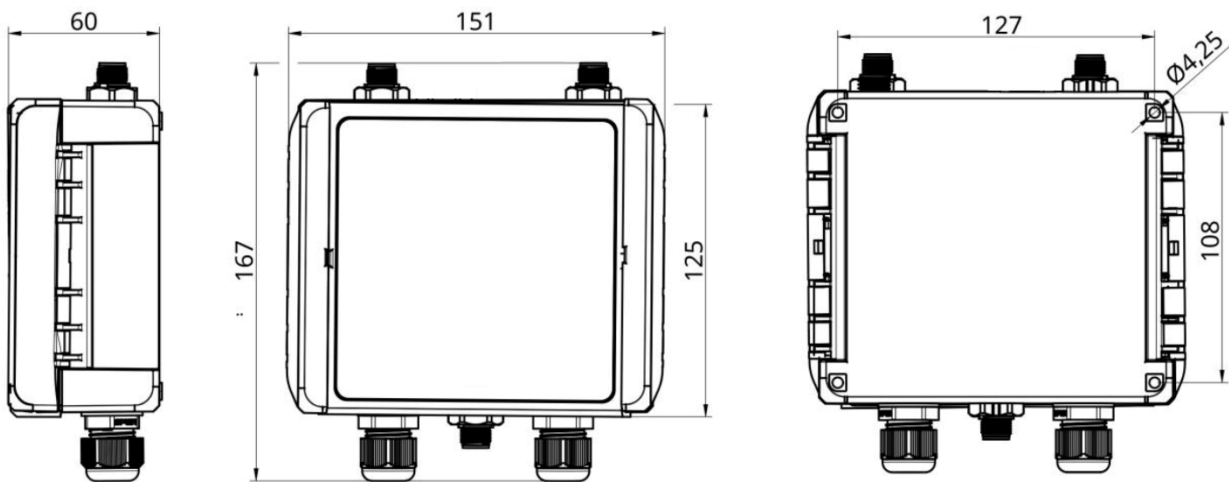
| Parameter | Value |
|-------------------------------------|--|
| Expected lifetime | +10 years |
| Connectivity | Cellular: LTE Cat-M1, NB-IoT (SIM included) |
| | WiFi: 2.4GHz (802.11 b/g/n) |
| | Optional: Satellite, LoRaWAN |
| Standards | DS/EN 61326-1:2013 |
| Battery Life | Dependent on measurement and transmission intervals, typically up to 12 months of continuous operation. |
| Common sensors offered in solutions | Level and flow: VEGA C21 or Keller 36XW Odor and corrosion: Consibio H ₂ S Sensor Water Quality: Dependable on application, typically Xylem or InSitu |



Cellular

| Parameter | Value |
|-------------------|---|
| Coverage | 700+ vendors across 180+ countries |
| Network Selection | Automatic scanning and selection of the best network based on coverage |
| SIM Card | Included with a Consibio Cloud subscription; covers data in 180+ countries |
| Data Security | TLS 1.3 Protocol |
| Power Management | Smart power design with automatic switching between wired, rechargeable, and backup battery options |

Mechanical



| Parameter | Value |
|----------------------|--|
| Operating Conditions | -20°C to +50°C (-4°F to +122°F), 0-100% RH |
| Dimensions | Length: 151 mm (5.94 in), Width: 125 mm (4.92 in), Height: 60 mm (2.36 in) |
| Housing Material | Polycarbonate (UV and weather-resistant) |
| IP-Rating | All components are at least IP67 |
| Local interaction | "Wake up" button for manual activation |
| Antenna | Internal flexible antenna, option for external IP67-rated antenna |



| | |
|---------------------|--|
| I/O Connections | Power: 5-pin M12 connectors at the top for 24VDC power supply Sensor/actuator connections: One 8-pin M12 connector, Two M16 cable glands |
| I/O Expansion Ports | Two internal expansion ports for modular and plug&play connectivity of sensors and actuators |
| Expansion Boards | RS485, RS232, SDI-12, 2x 4-20mA inputs, 2x 0-10V inputs, Analog outputs (4-20mA, 0-10V), Internal barometric pressure, Strain gauge interface, Pt100 temperature expansion, Thermocouple LoRaWAN, Satellite |

Electrical

| Parameter | Value |
|-----------------------------|--|
| Wired Supply | 24VDC or 6V solar panel; powers the device and recharges the Li-ion battery |
| Rechargeable Li-ion Battery | 38Wh capacity, automatically recharged when wired supply is available |
| Backup Battery | 60Wh primary Li-SOCI2 D cell, 10+ years lifespan without use |
| Battery Life | Dependent on measurement and transmission intervals, typically configurable for years of operation |



Connect multiple sensors

The Consibio Logger is designed for maximum flexibility, allowing you to connect multiple sensors effortlessly. With the addition of our Smart Expansion Boards, you can integrate sensors using any protocol. This modular approach ensures that you can expand your monitoring setup without limitations, making it ideal for complex applications.



Common applications

- **Wastewater Systems:** Minimize overflow risks by tracking water levels, flow, and/or H₂S levels to manage surges, detect blockages, and optimize chemical dosing.
- **Pump Stations:** Monitor pump health using operational data, extending equipment lifespan and reducing unplanned maintenance.
- **Environmental Water Quality:** Measure dissolved oxygen, pH, salinity, and turbidity to protect ecosystems, prevent contamination, and comply with environmental standards.
- **Stormwater Management:** Real-time flow and water quality data enable proactive stormwater management, reducing pollution and overflow risks in urban areas.



Military grade enclosure and crossbeam

Durable enclosure and crossbeam for fast, simple and robust installation

The Consibio Logger Series can be supplied in a rugged enclosure designed for the harshest environments. The military grade enclosure in combination with the crossbeam simplifies installation and increases robustness for requiring applications like manholes and sewer systems.



Revision history

| Version | Comments |
|------------|---|
| 2023-04-09 | Initial version |
| 2023-04-18 | Updated information on rugged enclosure |
| 2023-06-12 | Updated information on heating element |
| 2024-09-25 | Added design |
| 2024-11-11 | Added new cases for monitoring |

